



# WORLD CLIMATE RESEARCH PROGRAMME

*Update on strategy and implementation*

Carolyn Reynolds, Keith Williams, Michel Rixen

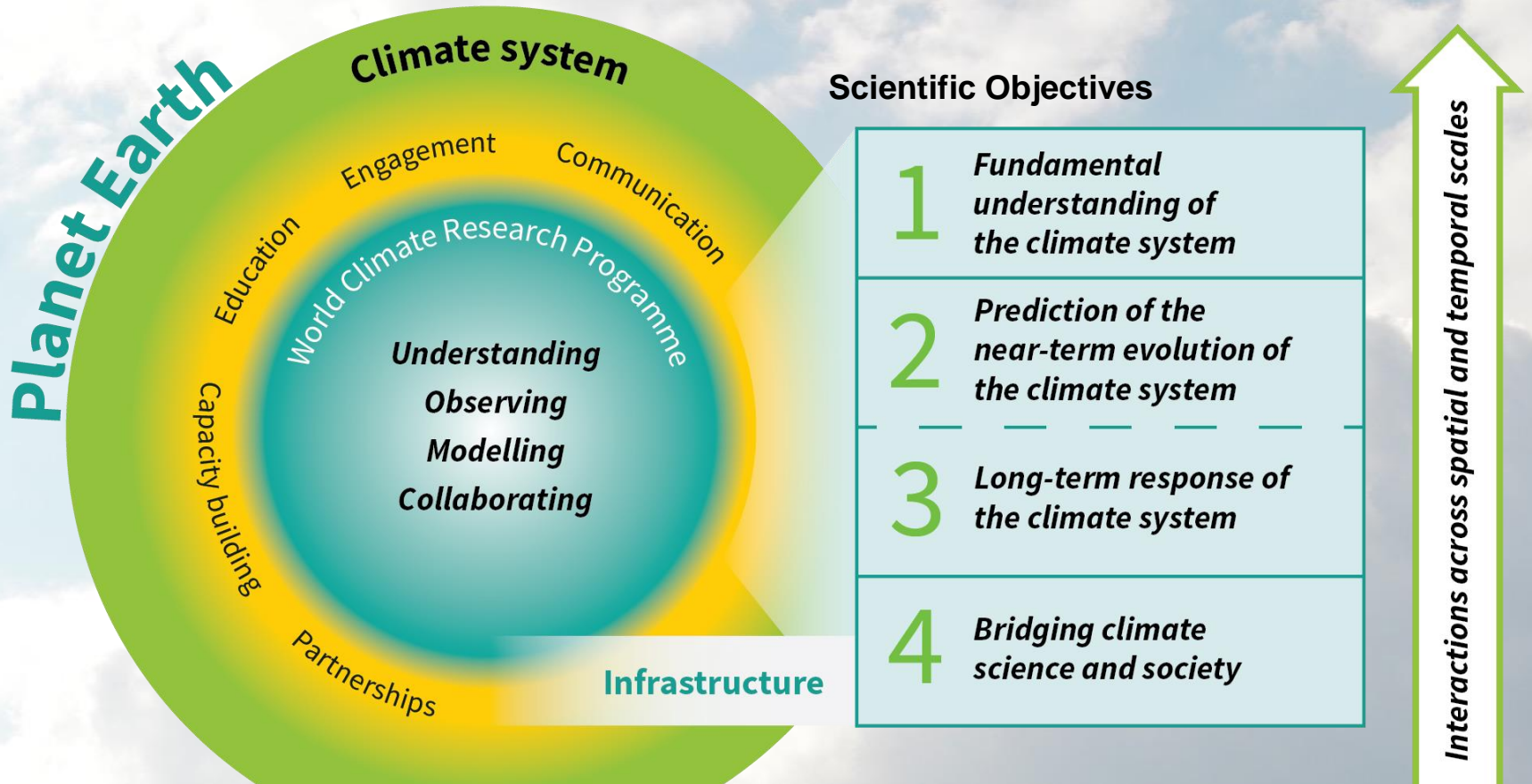
WGNE35, 2-5 Nov 2020



International  
Science Council



# WCRP Strategic Plan: Overview



- A hierarchy of simulation tools
- Sustained observations and reference data sets
- Need for open access
- High-end computing and data management

# First Draft of a New WCRP Structure

## Joint Scientific Committee

### WCRP Secretariat

#### Lighthouse Activities

Major experiments, high visibility projects,  
infrastructure building blocks  
*Ambitious and exciting*

Ongoing and additional  
activities and fora

Fixed-term Projects

#### International Offices

Conferences and Workshops

#### WCRP Communities Enduring Capabilities, Homes for Expertise

Reference Datasets,  
Evaluations and Benchmarking

- *Climate and Cryosphere*
- *Climate and Ocean Variability, Predictability and Change*
- *Global Energy and Water Exchanges*
- *Stratosphere-troposphere Processes And their Role in Climate*
- *Earth System Modelling and Observational Capabilities (new)*
- *Regional Climate Information for Societies (new)*

Diversity- and Capacity-  
building: ECRs, Regions

Rapid Updates, Syntheses  
Assessments, Gap Analyses

Communications and Outreach



# Proposed Lighthouse Activities

## Earth System Change

To design, and take major steps toward delivery of, an integrated capability for quantitative observation, explanation, early warning and prediction of Earth System Change on global and regional scales, with a focus on multi-annual to decadal timescales.

## My Climate Risk

To develop a new framework for assessing and explaining regional climate risk to deliver climate information that is meaningful at the local scale.

## Safe Landing Climates

To explore the routes to climate-safe landing 'spaces' for human and natural systems, on multi-decadal to centennial timescales; connecting climate, Earth system and socio-economic sciences. Explore present-to-future "pathways" for achievement of key SDGs.

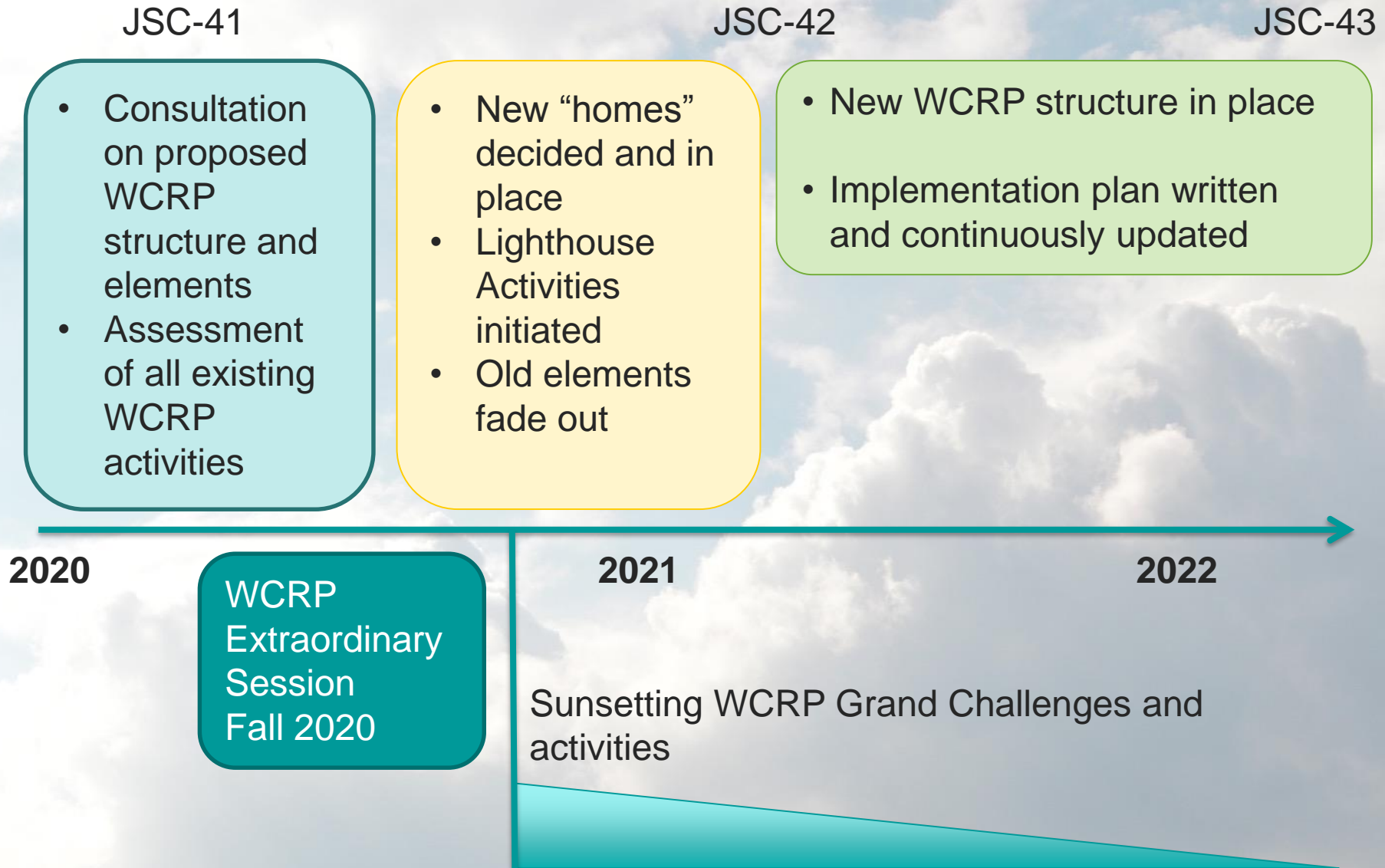
## Digital Earths

To develop a digital and dynamic representation of the Earth system, optimally blending models and observations, to enable an exploration of past, present and possible futures of the Earth system.

## WCRP Academy

To establish one or more targeted capacity exchange climate programmes, working with one or more of the other lighthouses and established climate education providers, including universities.

# Soft Transition Timeline



JSC-*n* = WCRP Joint Scientific Committee Sessions (meetings)

# Model-data home: current options

1. Model-data home includes CMIP with a dedicated Project Office TBD
2. CMIP broader (including S2S) framework serving as model-data home, building on CMIP Office call – so far only viable secretariat option - preferred by most people so far
3. Model-data home with dedicated office separate from CMIP structure and office
4. Model-data home as a joint WMAC+WDAC governance without an office

Feedback and alternatives welcome!



**Thank You**



WORLD  
METEOROLOGICAL  
ORGANIZATION



United Nations  
Educational, Scientific and  
Cultural Organization



Intergovernmental  
Oceanographic  
Commission



International  
Science Council